

Akemi

Pattern: Women's Tank Top
by Wiksten

Pattern: Pack It Up 2
by Seams Like a Dream



Pattern: Sweet Pea Pods
by Lazy Girl Designs

Pattern: Delight Quilt
by Jaybird Quilts

Akemi

5 Patterns / 13 Color Combinations
Orders in by January 15th will ship mid April



27789 W (Denim) Tye Dye Floral



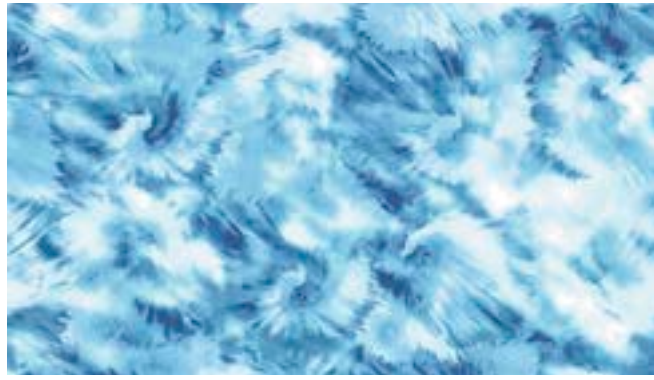
27790 C (Coral) Tossed Floral



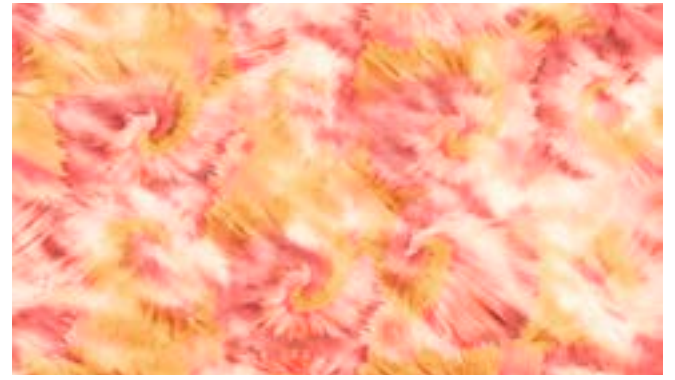
27790 W (Denim) Tossed Floral



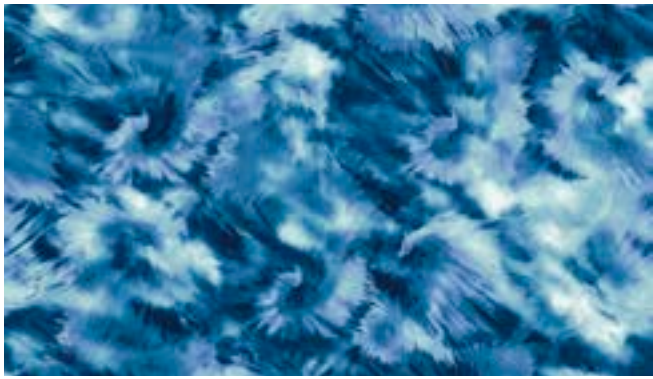
27790 Z (White) Tossed Floral



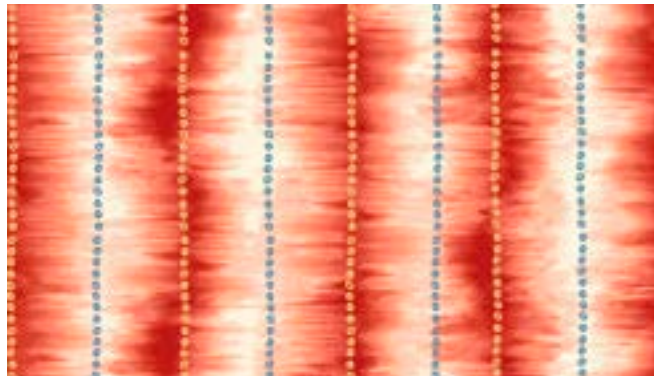
27791 B (Chambray) Tye Dye



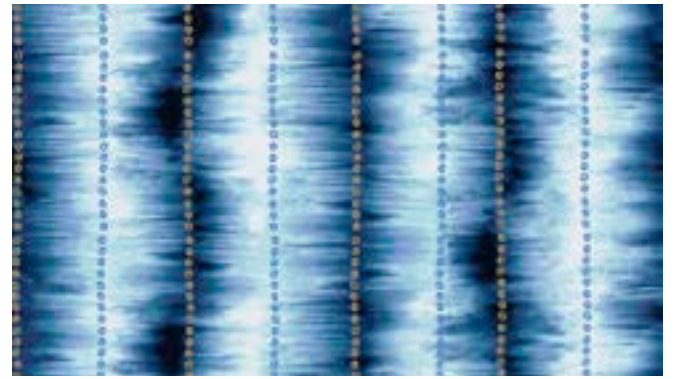
27791 C (Coral) Tye Dye



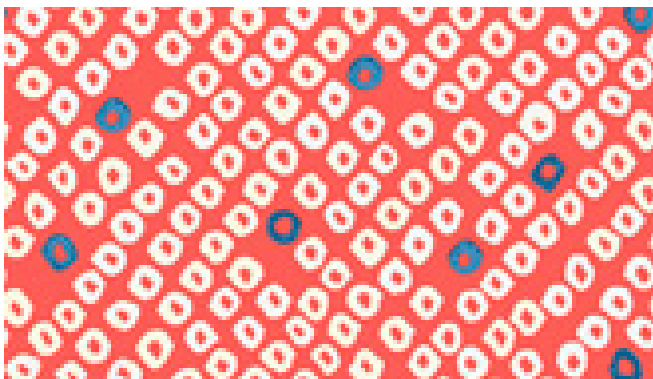
27791 W (Denim) Tye Dye



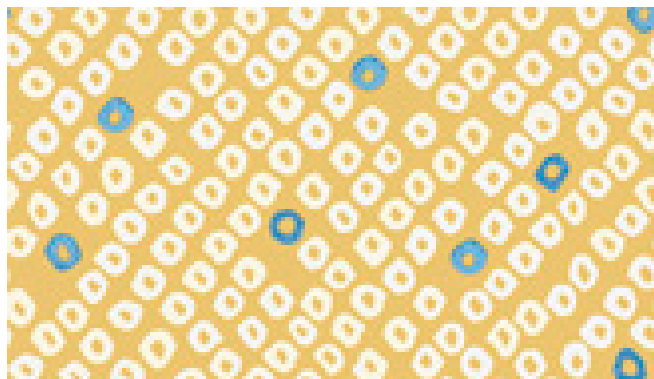
27792 C (Dk. Coral) Tye Dye Stripe



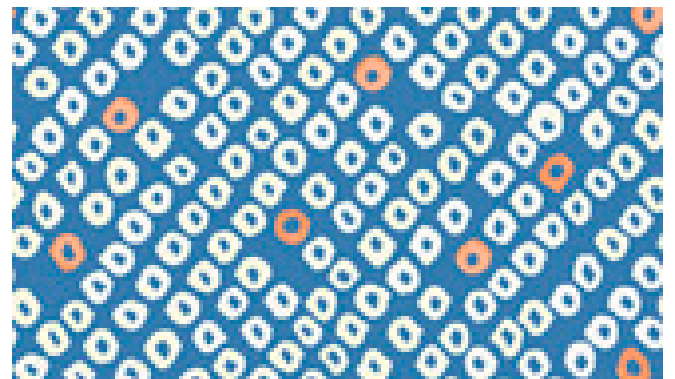
27792 W (Denim) Tye Dye Stripe



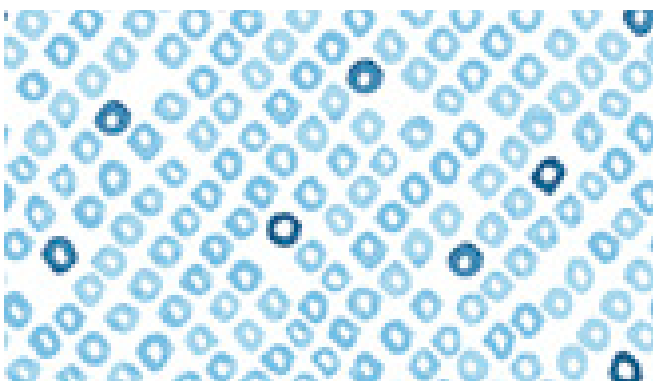
27793 C (Coral) Dot Geo



27793 S (Yellow) Dot Geo



27793 W (Denim) Dot Geo



27793 Z (White) Dot Geo



Suggested Coordinates

Any White Illusions



23528 NW (Navy)
Color Blends II



23528 S (Butterscotch)
Color Blends II



24776 CR (Peony)
Harmony/Woven



24776 SA (Maize)
Harmony/Woven



24776 W (Artic Blue)
Harmony/Woven

