

PIXIE DOTS fabric flower

because fabric should be fun!

approximate SIZE: 6" wide X 18" tall



Designed by Jane Headley



While all possible care has been taken to ensure the accuracy of this pattern, we are not responsible for printing errors or the way in which individual work varies.

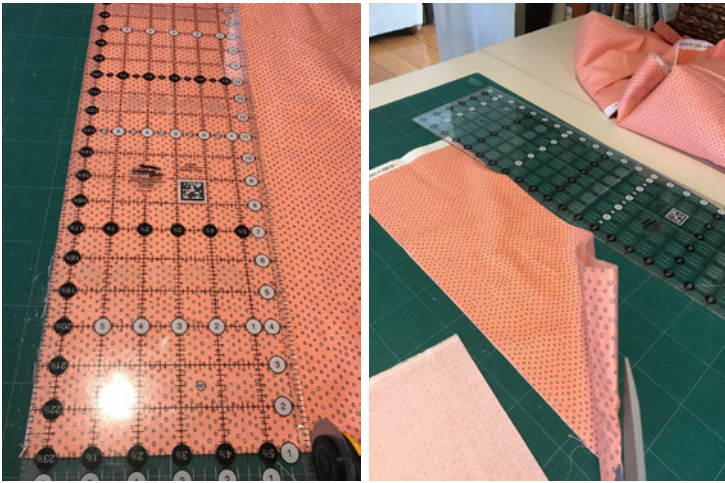
SUPPLIES & TOOLS (To make one flower)

- Main color- ½ yd- Cut 2 strips 6 ½" x width of fabric. Use one full strip and one half strip.
- Contrast center- 5" square rounded off to make a circle
- 3/8" diameter dowel cut to desired length
- Hot glue gun
- Sewing machine and matching thread
- Basic sewing supplies

INSTRUCTIONS

STEP 1

Cut 2 strips 6 ½" x width of fabric. Cut one strip in half.



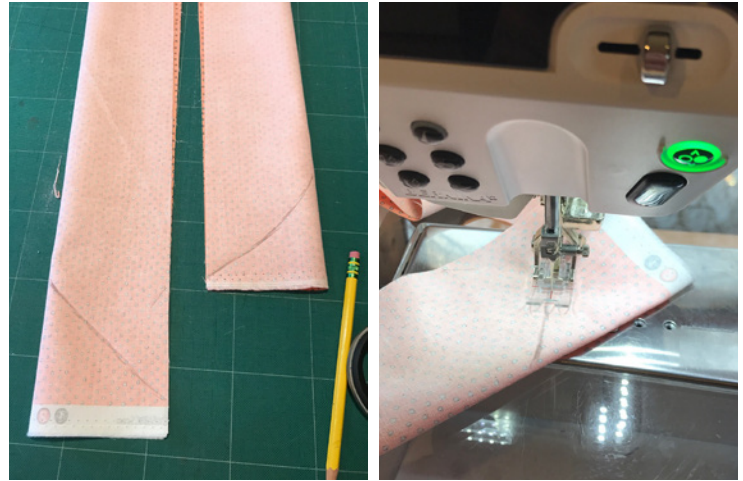
STEP 2

Sew whole strip and half strip together with ½" seam allowance. Press open.



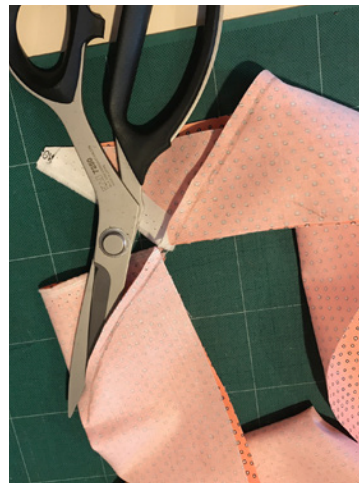
STEP 3

With right sides together, folded lengthwise, draw a line at an angle at each end. Start the line at the raw edge near the end of the strip (not including selvage) and angle to the fold at 3" away. Stitch along that line.



STEP 4

Trim close to stitching. Turn to right side.



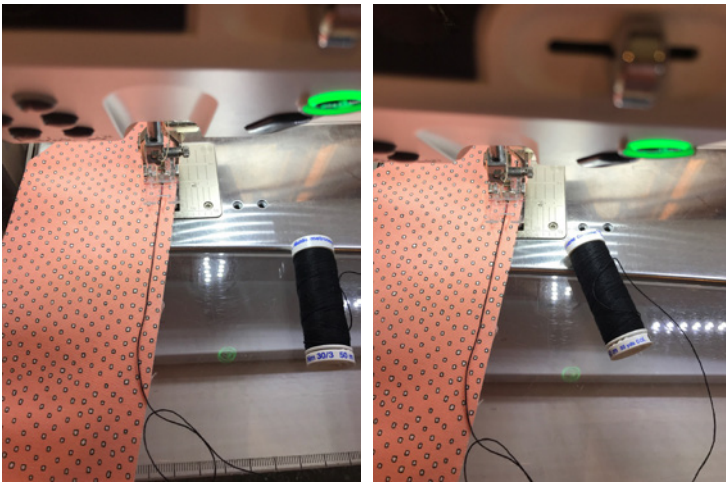
STEP 5

Fold strip in half lengthwise with wrong sides together and press.



STEP 6

Gather along the raw edge using a wide zigzag stitch centered over a heavy thread (topstitching, upholstery, cordonet, button thread). Be careful to keep the thread in the center of the zigzag.



STEP 7

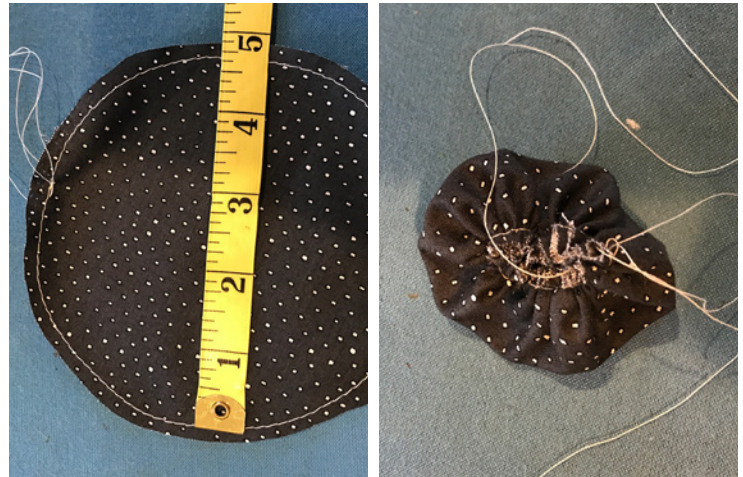
Pull the heavy thread from each end until the gathered edge is at 20". Secure the ends to keep the gathers from pulling out. Set aside.



Optional- finish the gathered edge by serging.

STEP 8

Make a 5" diameter circle in the contrast fabric for the center of the flower. Run a basting stitch around the edge of the circle and pull up the bobbin thread to gather as tightly as possible to fit around the dowel.



STEP 9: ASSEMBLY

Place the contrast center loosely over the dowel and secure with hot glue.



Optional- Before attaching the contrast center, wrap dowel in a thin strip of green fabric for the stem! Attach strip at both ends with hot glue.



STEP 10

Wrap flower strip around the center by gluing the edge of the strip a few inches at a time. You want to keep the edges even to keep the flower full. If you wrap by moving down the dowel your flower will not be shaped correctly.



STEP 11

Enjoy your flower, but one will not be enough. Make lots in a variety of colors to brighten up your home!

