

# Pre-Cuts

Cool



(32) Fat Quarters  
FATQU COES 3PKC  
0 16542 54885 6

Warm



(32) Fat Quarters  
FATQU COES 3PKW  
0 16542 54886 3

Neutral



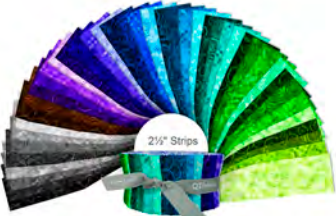
(20) Fat Quarters  
FATQU COES 3PKN  
0 16542 54887 0



(42) 10" Squares  
10SQ COES 6PKC  
0 16542 54883 2



(42) 10" Squares  
10SQ COES 6PKW  
0 16542 54884 9



(42) 2 1/2" STRIPS  
STRIP COES 6PKCX  
0 16542 54888 7



(42) 2 1/2" STRIPS  
STRIP COES 6PKWX  
0 16542 54889 4



byAnnie.com Pattern:  
Project Bags 2.0

#PBA206-2, PROJECT BAGS 2.0  
FOR SALE PATTERN 8002M



0 16542 24580 9

Sew Cute & Quirky Pattern:  
Walkie Talkie Wristlet

NOT distributed by QT Fabrics,  
purchase via <https://www.quirkyb.com/>

#SCAQ, WALKIE TALKIE WRISTLET  
FORSALE PATTRN 8010 D



0 16542 32829 8

Wendy Sheppard Pattern:  
Lollies

#WS65, LOLLIES  
FORSALE PATTRN 8016P



0 16542 55045 3



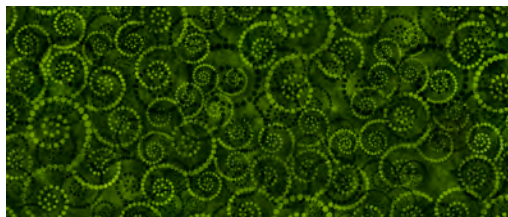


Dotted Scroll

Blooming Vine

Gem Glitter

Linear Maze



31094 F (Army)



31094 FH (Evergreen)



31094 FJ (Hunter)



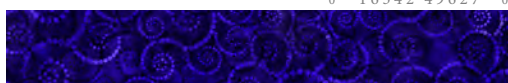
31094 Q (Dark Teal)



31094 NW (Ultramarine)



31094 N (Navy)



31094 V (Violet)



31094 VP (Dark Iris)



31094 VM (Dark Grape)



31094 VL (Orchid)



31094 P (Sangria)



31094 RM (Wine)



31094 R (Dark Red)



31094 RO (Brick)



31094 O (Orange)



31094 OS (Tangerine)



31094 A (Brown)



31094 AT (Rootbeer)



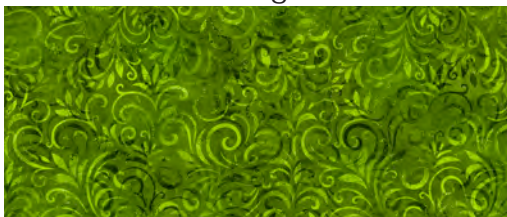
31094 AJ (Bark)



31094 K (Smoke)



31094 J (Black)



31095 H (Avocado)



31095 GH (Kelly)



31095 G (Grass)



31095 Q (Teal)



31095 W (Wedgewood)



31095 Y (Royal)



31095 VY (Violet Blue)



31095 VP (Iris)



31095 VM (Grape)



31095 VL (Magenta)



31095 P (Fuchsia)



31095 R (Red)



31095 RO (Tomato)



31095 O (Tiger Lily)



31095 OS (Marigold)



31095 S (Dandelion)



31095 A (Caramel)



31095 AS (Pecan)



31095 AJ (Coffee)



31095 K (Lt. Smoke)



31095 JK (Charcoal)



31096 H (Chartreuse)



31096 HG (Lime)



31096 GH (Shamrock)



31096 Q (Turquoise)



31096 B (Blue)



31096 Y (Light Royal)



31096 V (Purple)



31096 L (Dark Lilac)



31096 PV (Light Grape)



31096 P (Light Magenta)



31096 PL (Bubblegum)



31096 R (Watermelon)



31096 O (Melon)



31096 OS (Citrus)



31096 SA (Yellow)



31096 S (Lemon)



31096 AZ (Wheat)



31096 AS (Cinnamon)



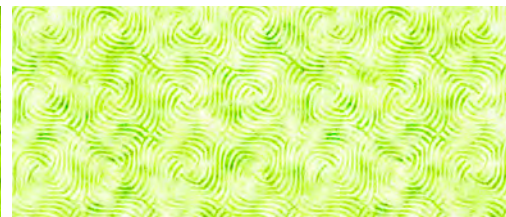
31096 A (Lt. Coffee)



31096 KZ (Ash)



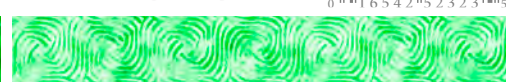
31096 K (Dk. Gray)



31097 H (Celery)



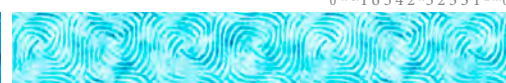
31097 HZ (Pear)



31097 HG (Mint)



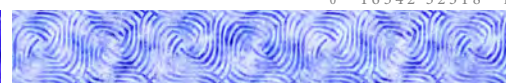
31097 Q (Turquoise)



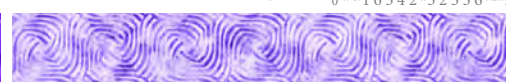
31097 BZ (Sky)



31097 B (Blue)



31097 V (Lt. Amethyst)



31097 L (Lilac)



31097 LV (Lavendar)



31097 PL (Lt. Orchid)



31097 P (Lt. Bubblegum)



31097 RZ (Lt. Watermelon)



31097 C (Salmon)



31097 OZ (Creamsicle)



31097 SA (Butterscotch)



31097 SZ (Lt. Lemon)



31097 SE (Chamois)



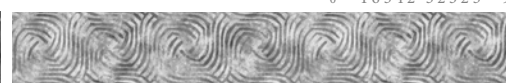
31097 AZ (Sand)



31097 A (Suntan)



31097 KZ (Lt. Ash)



31097 K (Gray)