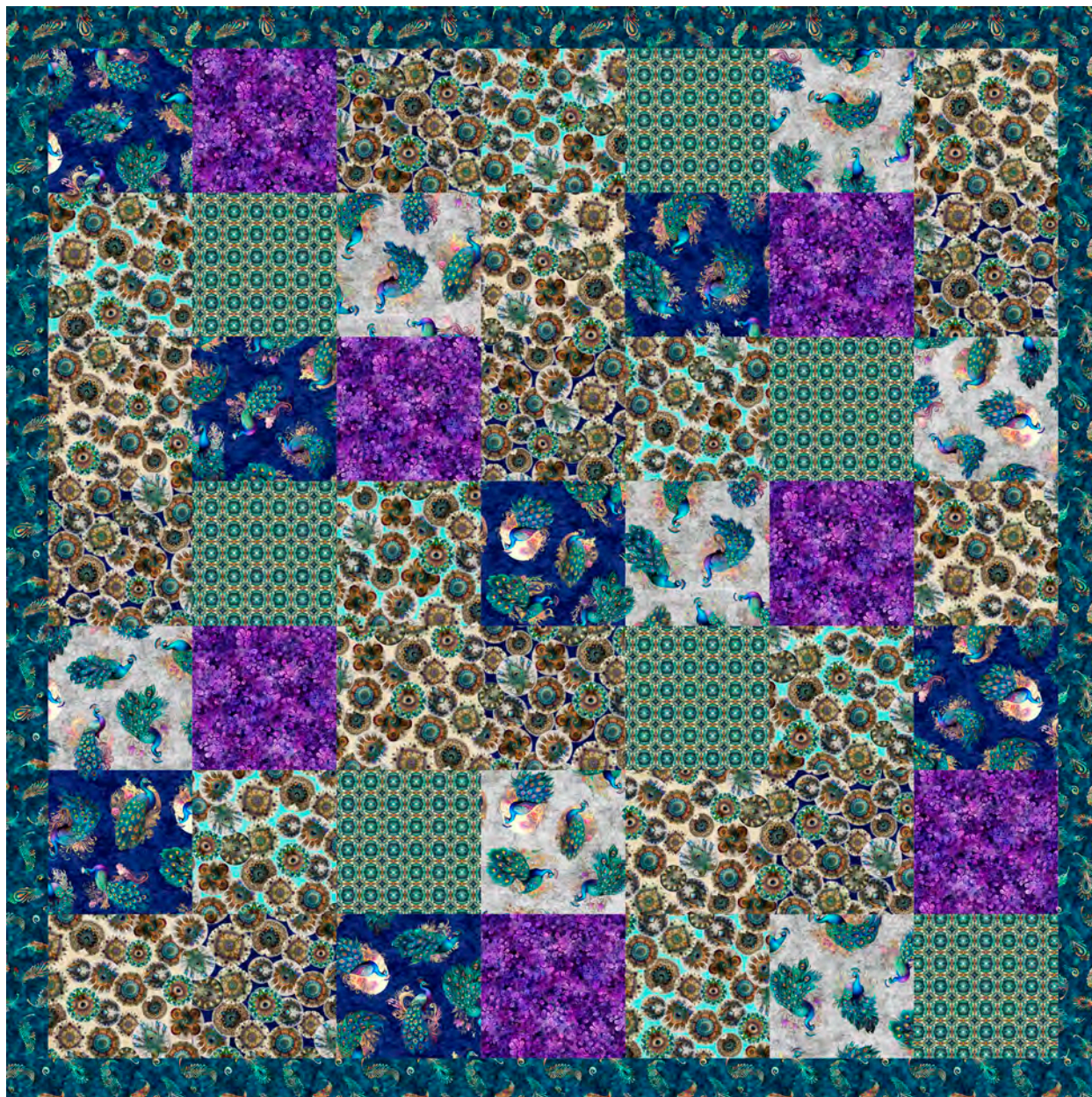
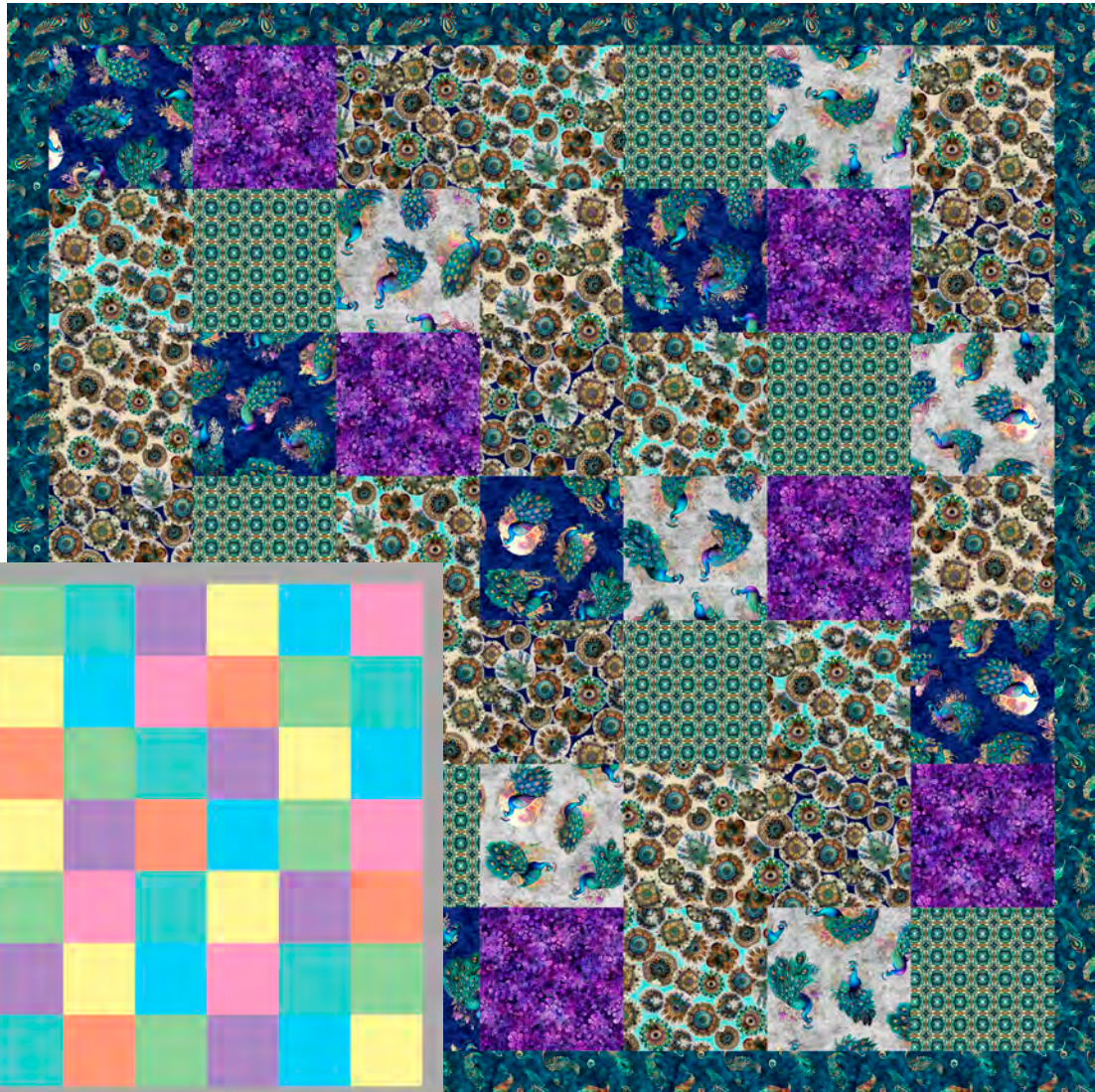


72" x 72"



Designed by: Jane Headley





Finished Size: 72" x 72"

FABRIC REQUIREMENTS

| | | | | | | | |
|--|--|--|--|--|--|--|--|
| | <p>Fabric A 30561 Q</p> <p>1½ YARDS</p> | | <p>Fabric B 30559 Y</p> <p>⅔ YARD</p> | | <p>Fabric C 30563 V</p> <p>⅔ YARD</p> | | <p>Fabric D 30560 N</p> <p>⅔ YARD</p> |
| | <p>Fabric E 30560 Q</p> <p>⅔ YARD</p> | | <p>Fabric F 30562 Q</p> <p>⅔ YARD</p> | | <p>Fabric G 30559 K</p> <p>⅔ YARD</p> | | <p>Fabric H 30560 E</p> <p>⅔ YARD</p> |

OTHER MATERIALS & EQUIPMENT:

- ⅞ YARD 20"-22" WIDE MEDIUM-WEIGHT FUSIBLE INTERFACING
- 12 GROMMETS ⅜"–½"
- SERGER, OPTIONAL

Designed by: Jane Headley

We recommend that you carefully read through all instructions before starting your project.

CUTTING DIRECTIONS

Note:

WOF = width of fabric from selvage to selvage for yardage. Label pieces with the fabric letter. Remove as little fabric as possible when trimming selvages from WOF strips.

Fabric A, cut:

- (6) 5" x WOF strips for side and bottom borders.
- (2) 6¼" x WOF strips for top border.

Fabric B–H, cut from each:

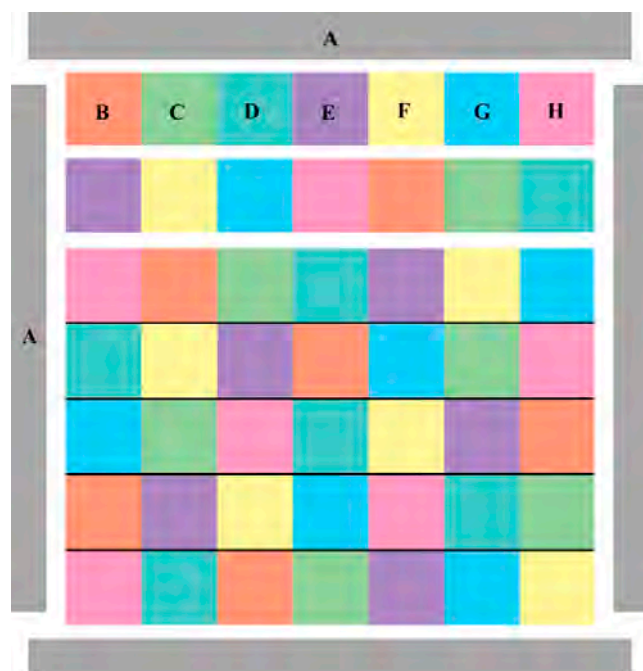
- (2) 10" x WOF strips.
Subcut into (7) 10" squares.

Interfacing, cut:

- (4) 6" x WOF strips.

SHOWER CURTAIN ASSEMBLY

Use a ¼" seam allowance for all stitching. Using a serger for this project will finish the seam allowance edges as you stitch. If not using a serger, zig-zag stitch or overcast stitch along the layered outer edges of the seam allowance to finish raw edges and prevent fraying.



Assembly Diagram

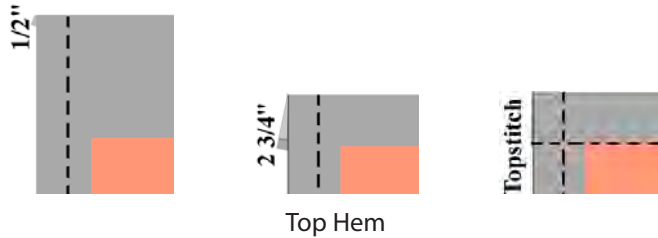
Note: If any fabrics are directional, position them in an upright position when arranging in rows.

1. Arrange the 10" squares in 7 rows with 7 squares in each row. Stitch the squares together in each row to make (7) 10" x 67" rows. Finish seam allowances. Press seams in opposite directions from row to row.
2. Join the rows to complete the 67" x 67" patchwork center. Finish seam allowances. Press seams to 1 side.
3. Sew the Fabric A 5" x WOF strips short ends together to make a long strip. Finish seam allowances. Press seams to 1 side. Cut into (1) 76" bottom border and (2) 67" side borders.
4. Stitch the Fabric A 6¼" x WOF strips short ends together to make a long strip. Finish seam allowance. Press seam to 1 side. Trim to 76" for the top strip.
5. Fuse the 6" interfacing strips to the wrong side of the top border strip, aligning with the top edge of the border and butting the ends of the interfacing strips. Trim even at the ends of the border.
6. Sew the side borders to opposite sides of the patchwork center. Finish seam allowance. Press seams toward the borders.
7. Repeat step 6 with the top and bottom borders.
8. Turn side edges under ½" and press. Turn under 1½" and press. Topstitch along the inside folded edge of the hem.
9. Repeat step 8 with the bottom edge, backstitching at each end of the seam.



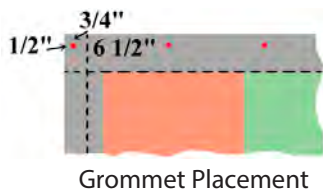
Side & Bottom Hems

10. Turn the top edge under $\frac{1}{2}$ " and press. Turn under $2\frac{3}{4}$ " and press, keeping the ends aligned with the side edges. Topstitch along the inside folded edge of the hem, backstitching at each end of the seam. The curtain should measure 72" x 72".



11. Fold the curtain in half. Finger-press to mark the center of the top edge.

12. Make a mark $\frac{1}{2}$ " from the left edge, $\frac{3}{4}$ " down from the top edge. This will be the center of the first grommet. Measure and mark $6\frac{1}{2}$ " to the right for the second grommet. Continue to measure and make a mark for 4 more grommets (a total of 6 marks) in the left half of the curtain. Repeat on the right half of the curtain. There will be 6" between the 2 center marks.



13. Add grommets at the marks referring to the manufacturer's instructions to finish.